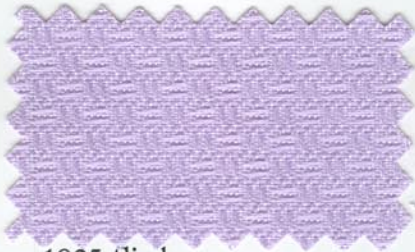


# Popkorn

100 % Baumwolle  
176 cm breit, mercerisiert, pflegeleicht



190 natur



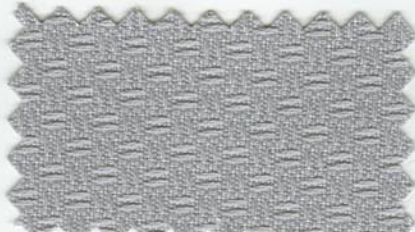
1925 flieder



195 altrosa



1190 ½ gebleicht



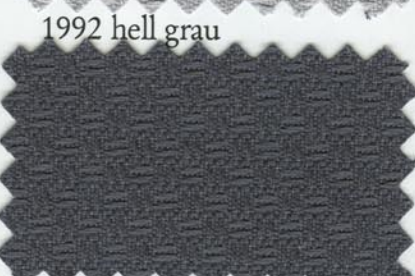
1992 hell grau



192 gelb



191 weiss



1990 grau



1972 rost



1912 creme



1943 hell blau



1969 dunkel rot



1914 sand



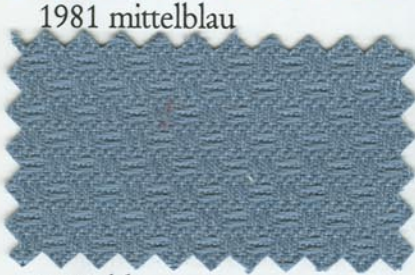
1981 mittelblau



1963 mandelgrün



1915 beige



1945 blau



198 dunkel grün



1918 hell gelb



196 dunkel blau



2900 Linopop, natur  
50 % Baumwolle, 50 % Leinen